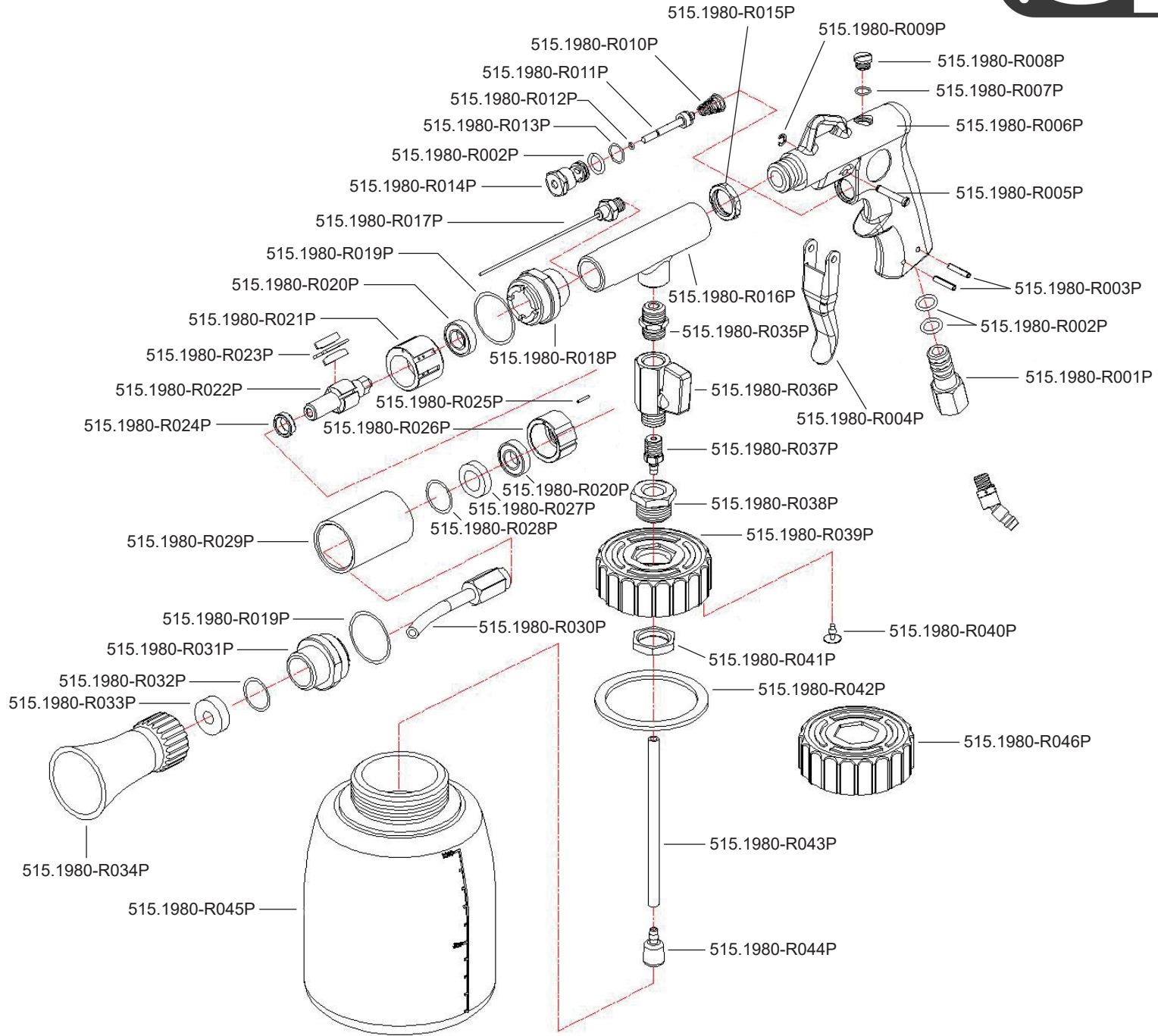


Art. 515.1980



**Art. 515.1980**

Art.-Nr.	Description	Beschreibung	Menge Qty.
515.1980-R001P	Air inlet screw	Lufteinlassschraube	1
515.1980-R002P	O-Ring	O-Ring	3
515.1980-R003P	Spring pin	Splint	2
515.1980-R004P	Trigger	Abzug	1
515.1980-R005P	Pin for trigger	Pin für Abzug	1
515.1980-R006P	Handle housing	Griffgehäuse	1
515.1980-R007P	O-Ring	O-Ring	1
515.1980-R008P	Screw	Schraube	1
515.1980-R009P	C-clip	C-Clip	1
515.1980-R010P	Valve spring	Ventilfeder	1
515.1980-R011P	Valve stem	Ventilstift	1
515.1980-R012P	O-Ring for valve stem	O-Ring für Ventilstift	1
515.1980-R013P	O-Ring	O-Ring	1
515.1980-R014P	Closing nut valve	Verschlusschraube Ventil	1
515.1980-R015P	Threaded ring	Gewinding	1
515.1980-R016P	Nozzle housing	Düsengehäuse	1
515.1980-R017P	Inner tube	Schlauch innen	1
515.1980-R018P	Housing nut	Gehäusemutter	1
515.1980-R019P	O-Ring	O-Ring	2
515.1980-R020P	Bearing	Kugellager	2
515.1980-R021P	Cylinder	Zylinder	1
515.1980-R022P	Rotor	Rotor	1
515.1980-R023P	Rotorblade	Rotorblatt	4

Art.-Nr.	Description	Beschreibung	Menge Qty.
515.1980-R024P	Spacer ring	Abstandsring	1
515.1980-R025P	Spring pin	Splint	1
515.1980-R026P	Front rotor blade	Vordere Rotorplatte	1
515.1980-R027P	Bearing	Kugellager	1
515.1980-R028P	O-Ring	O-Ring	1
515.1980-R029P	Aluminium housing	Aluminiumgehäuse	1
515.1980-R030P	Hurricane-nozzle	Hurricane-Düse	1
515.1980-R031P	Closing nut	Verschlussmutter	1
515.1980-R032P	O-Ring	O-Ring	1
515.1980-R033P	Muffler	Dämpfer	1
515.1980-R034P	Nozzle	Sprühdüse	1
515.1980-R035P	Threaded nut	Gewindemutter	1
515.1980-R036P	Switch valve	Schaltventil	1
515.1980-R037P	Screw for suction tube	Ansaugrohrverschraubung	1
515.1980-R038P	Closing nut for cap	Verschlussmutter für Deckel	1
515.1980-R039P	Cup connection ring	Behälterverschraubung	1
515.1980-R040P	Rubber plug	Gummistöpsel	1
515.1980-R041P	Threaded ring	Gewinding	1
515.1980-R042P	Lid gasket	Deckeldichtung	1
515.1980-R043P	Suction tube	Ansaugrohr	1
515.1980-R044P	Suction bushing	Ansaughülse	1
515.1980-R045P	Tank	Behälter	1
515.1980-R046P	Lid	Deckel	1