

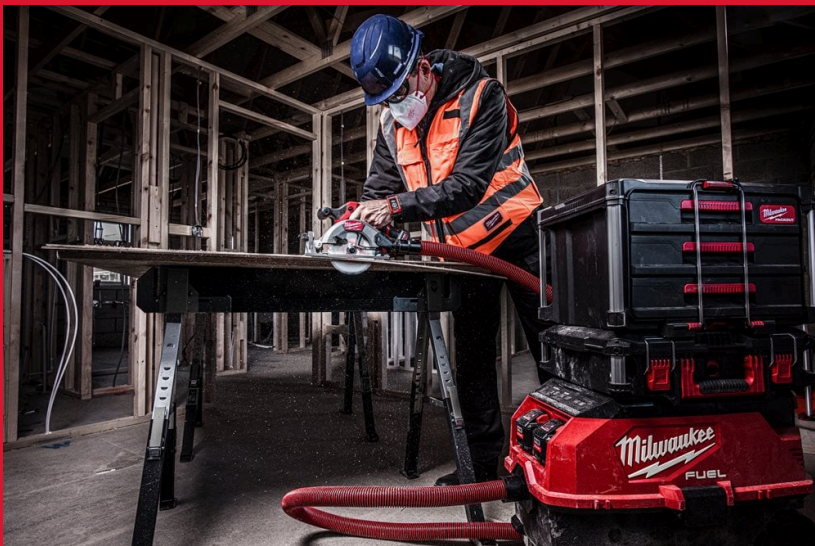
M18 ONEF2VC34M-O

M18 FUEL™ M CLASS AC/DC DUAL BATTERY DUST EXTRACTOR WITH VACLINK™

- Rated as an M Class extractor, it will filter 99.9% of harmful dust including MDF, plaster, cement and concrete thanks to the two HEPA H13 filters along with a filter cleaning system
- When paired with two M18™ 12.0 Ah batteries, it will run for 70 min on low and 40 min on high power mode, delivering 1980 l/min air delivery rate on DC mode (2550 l/min AC)
- PACKOUT™ compatible top, large rear wheels and lockable front wheels allow easy transportation of tools and accessories around the job site
- The anti-static 3 m long, crush and twist-resistant hose construction delivers extended hose life
- Wet and dry extractor with 34 litre drum and an automatic cut off to protect the filters from getting flooded
- A flow alarm tells the user of any drop in air flow resulting from a blockage
- VACLINK™ wireless dust control; ability to activate dust extractor via compatible tool or remote
- The DEK 26 power tool connector allows for efficient dust extraction from power tools
- The DNA of our FUEL™ platform redefines the balance of cordless technologies. MILWAUKEE®'s POWERSTATE™ brushless motor, REDLITHIUM™ battery pack and REDLINK PLUS™ electronic intelligence delivering outstanding power, run time and durability
- Flexible battery system: works with all MILWAUKEE® M18™ batteries



REDLITHIUM™



Air delivery AC (l/min)	2550
Capacity solids (l)	28
Hose diameter (mm)	36
Weight with battery pack (EPTA) (kg)	21.3 (2 x M18 FB12)
Kit included	No batteries supplied, No charger supplied, No kitbox or bag supplied
Article Number	4933498142