



**BOSCH**

# PFS 3000-2

## Quick Start Guide



**Robert Bosch Power Tools GmbH**  
70538 Stuttgart  
GERMANY

[www.bosch-pt.com](http://www.bosch-pt.com)



(2022.04)

1

1.



2.



3.



4.



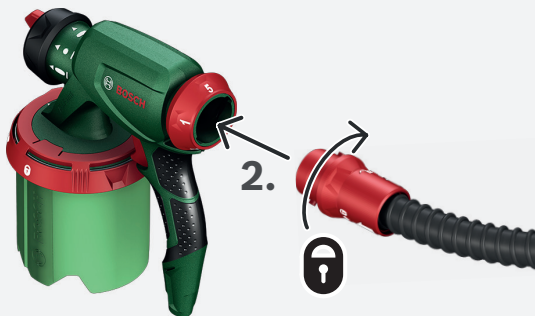
5.



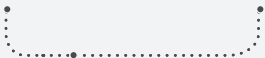
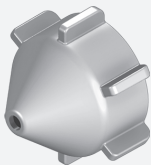
6.



2



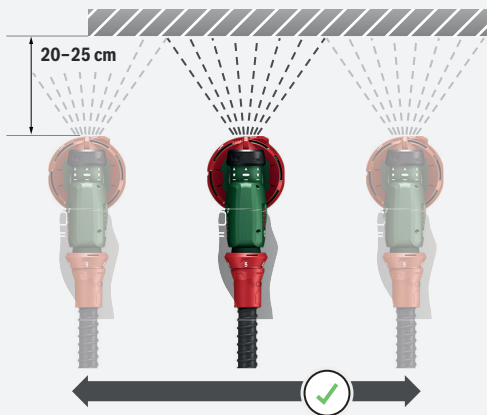
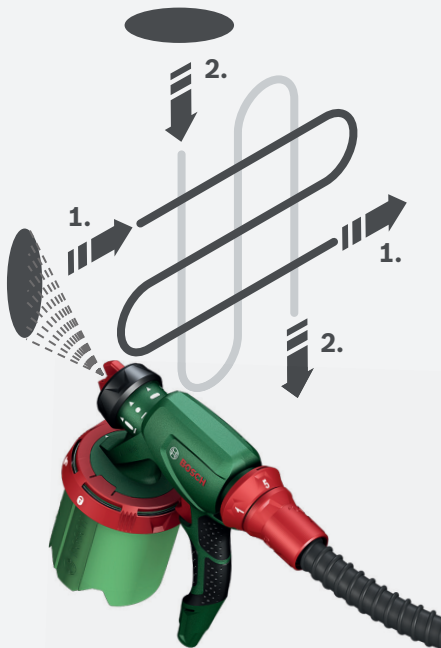
3



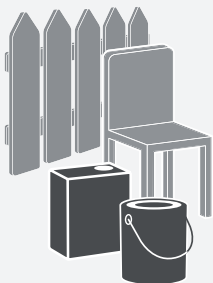


4





5



**AIR**Volume

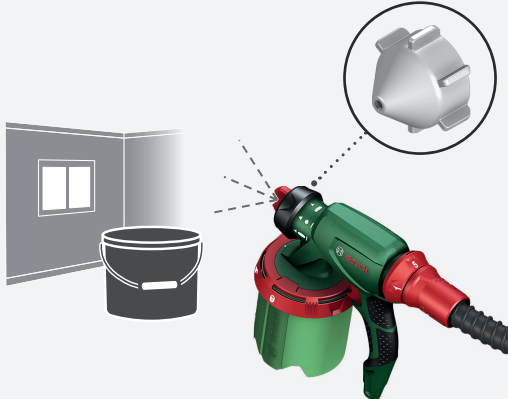


**ALL**Paint



**PAINT**Volume





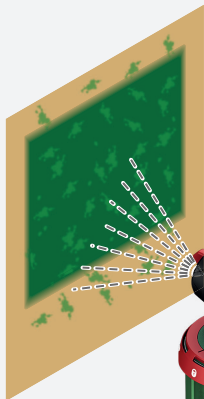
**AIR**Volume



**PAINT**Volume



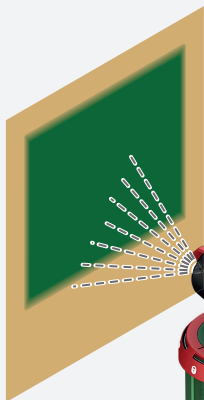
6



TEST



5



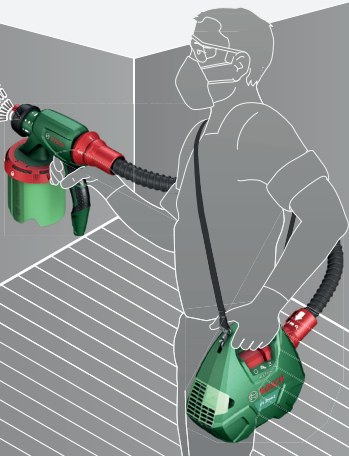
TEST



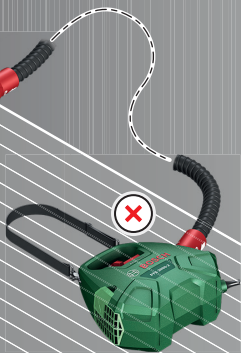
7



7



i

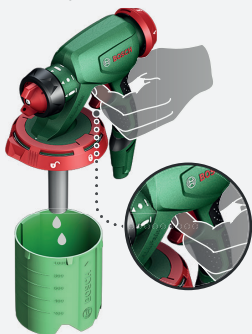


8

1.



2.



3.



4.

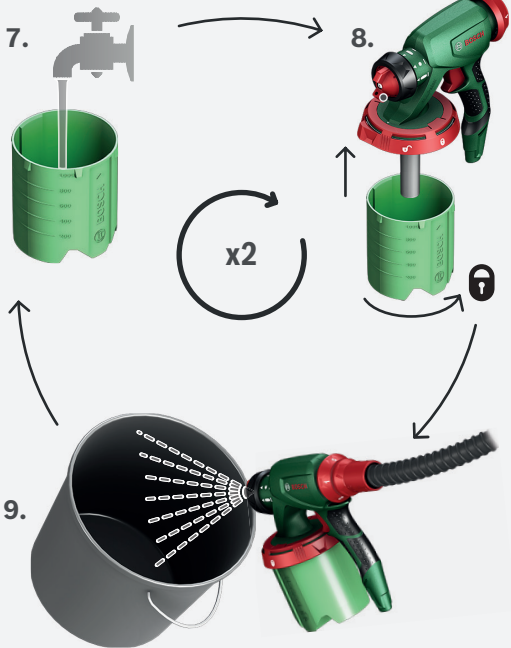


5.



6.







10.



11.



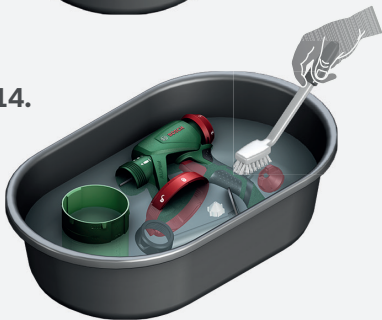
12.



13.



14.



15.



16.

