



Betriebsanleitung

Werkstattwagen

Operating Instructions

Tool Trolley

Mode d'emploi



Servante d'atelier

Instrucciones de uso

Carro para herramientas

Gebruiksaanwijzing

Gereedschapswagen

Istruzioni d'uso

Carrello portautensili

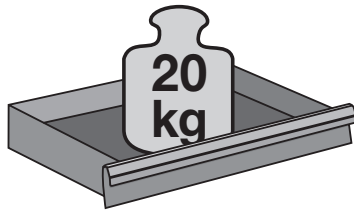
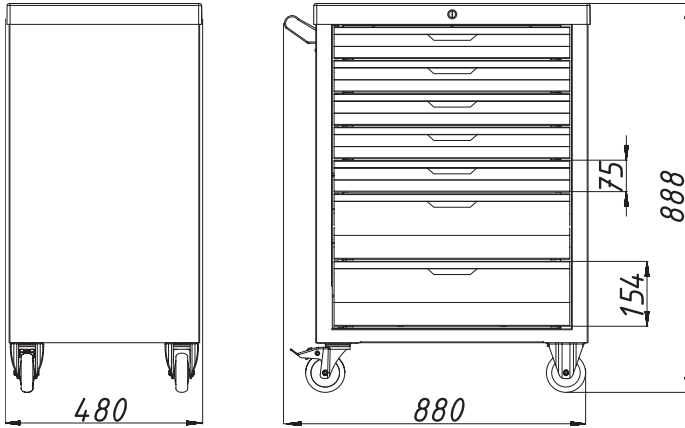


V5489

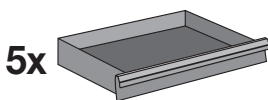




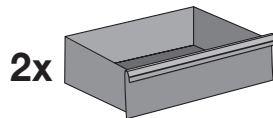
V5489



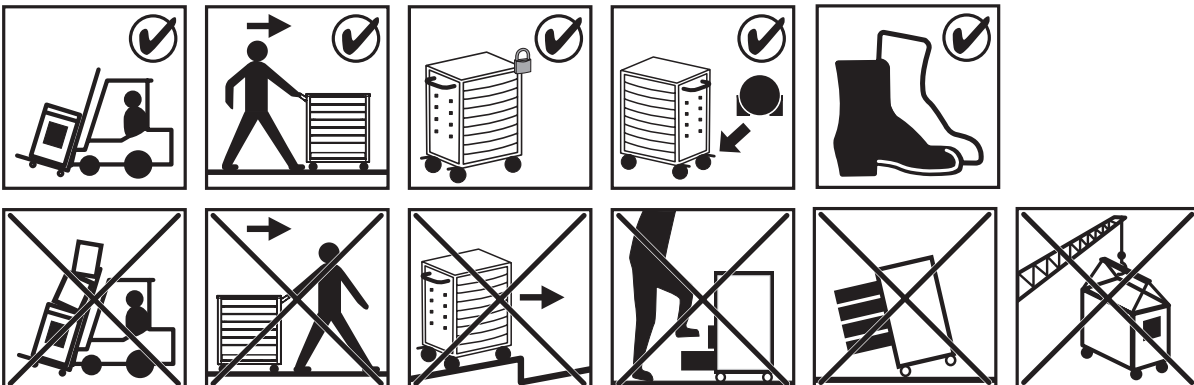
	Einzel- und Ersatzteile	Spare Parts
V1907	Bockrolle Ø 125 mm	Fixed Castor Ø 125 mm
V1908	Lenkrolle mit Bremse Ø 125 mm	Swivel Castor with brake Ø 125 mm
V5489-1	Führungsschienen	Drawer Rails (Pair)
V5489-2	Matte	Plastic Worktop
V5489-3	Hohes Schubfach	High Drawer
V5489-4	Flaches Schubfach	Flat Drawer
V1904	Verriegelungssystem	Locking System
	Zubehör	Accessories
V2393	Dosenhalter	Can holder
V2397	Papierrollenhalter	Holder for paper reel
V2398	Trennblech-Satz	Set separation sheets



569 x 398 x 75 mm



569 x 398 x 154 mm



VIGOR GmbH • Am Langen Siepen 13-15 • 42857 Remscheid • GERMANY

+49 (0) 21 91 / 97 95 • FAX +49 (0) 21 91 / 97 96 00 • e-mail info@vigor-equipment.com • www.vigor-equipment.com