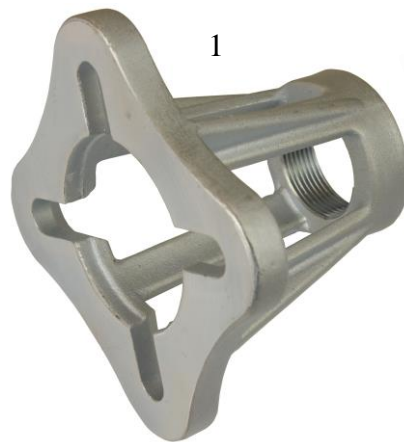


Handhavande instruktion till 1090-30
Handling instruction for 1090-30
Bedienungsanleitung zu Werkzeug 1090-30
Mode d'emploi de l'outil 1090-30

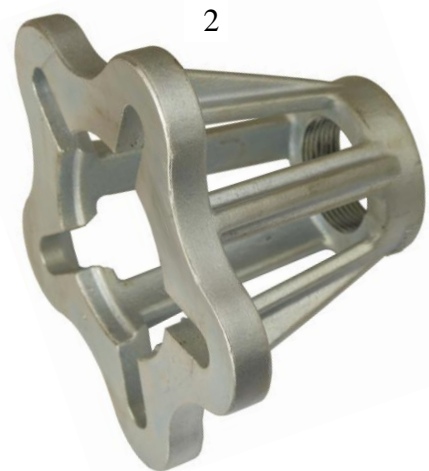
1090-30

1 – 1090-30-4

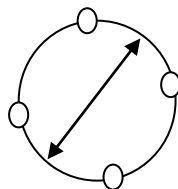
2 – 1090-30-5



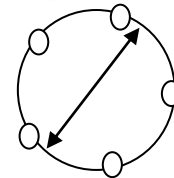
1



2



Ø 92-120 mm



Ø 98-131 mm



WALLMEK i Kungälv AB – Special tools for auto repairs

www.wallmek.se • info@wallmek.se • Tel. +46(0)303 58580 • Bultgatan 18 442 40 Kungälv, Sweden

